



# FY 2015 ANNUAL REPORT OF THE LOGAN COUNTY DEPARTMENT OF PUBLIC HEALTH

## BOARD OF HEALTH

---

Bill Sahs, President  
Todd Walker, DMD, Vice President  
Richard Bivin, MD, Secretary/Treasurer/Medical Advisor  
Maxine Lolling, RN  
Mike Rohrer, RPh  
Roger Bock  
Erin Schafer, MD  
Jan Schumacher, County Board Representative

## TUBERCULOSIS SANATORIUM BOARD

---

Tracy Mizeur, MD, President  
Diane Stephenson, RN, BSN Secretary/Treasurer  
Kaye Wilmert, CRNA

## HOME HEALTH PROFESSIONAL ADVISORY COMMITTEE

---

Janet Schahl, RN	Melissa Hardiek Cox, MD
Jeanette Behrends	Kara Davis, RN, BSN
Katherine Yapple, BBA	Don Cavi, MS, LEHP
Marsha Darlington	Geri Mayes
Melodye Crabtree, RN, BSN	Jennifer Bergman

---

# Logan County Department Of Public Health

109 Third Street  
www.lcdph.org

Lincoln, IL 62656

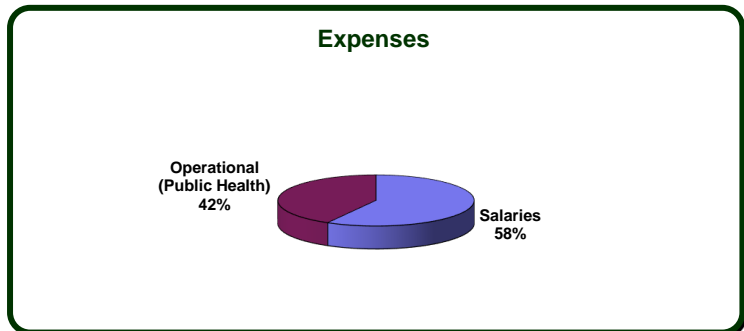
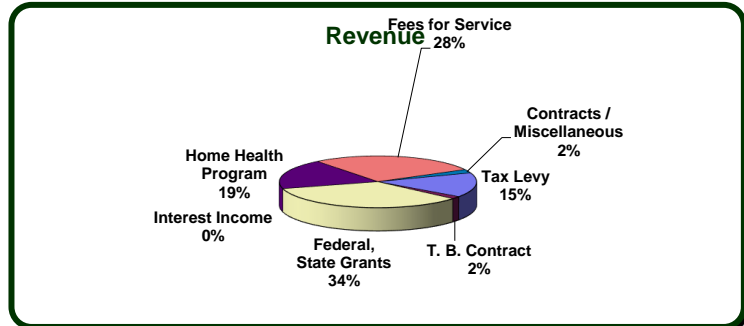
Phone 217-735-2317

info@lcdph.org

## Financial Report

December 1, 2014 - November 30, 2015

FY 2015	
<b>Beginning Fund Balance</b>	<b>\$454,714</b>
<b>REVENUES</b>	
Tax Levy	\$370,152
T. B. Contract	\$38,014
Federal, State Grants	\$827,727
Interest Income	\$231
Home Health Program	\$454,163
Fees for Service	\$670,494
Contracts / Miscellaneous	\$53,780
<i>Total Revenues -</i>	<i>\$2,414,561</i>
<b>EXPENSES</b>	
Salaries	1,515,985
Operational (Public Health)	1,090,702
<i>Total Expenses -</i>	<i>\$2,606,687</i>
<b>Revenues over Expenses</b>	<b>(\$192,126)</b>
<b>Ending Fund Balance</b>	<b>\$262,588</b>



## Programs and Services

### HOME HEALTH

Skilled Nursing Visits	1,174
HH Aide Visits	349
Physical Therapy Visits	1,206
Speech Therapy Visits	1
Occupational Therapy Visits	322
<b>Total Activities -</b>	<b>3,052</b>

### DENTAL

Patients	5,604
Patient Visits	3,172
New Patients	666

### CHRONIC DISEASE

Public Health Visits to Patients	133
Health Screenings	2,193
Oral Cancer Screenings (Health Fair)	20
Adult Injections	89
<b>Total Activities -</b>	<b>2,435</b>

### CHILD HEALTH

Infant/Toddler Car Seats	3
WIC Visits	9,880
Vision Tests	330
Hearing Tests	608
Blood Lead Screenings	391
<b>Total Activities -</b>	<b>11,212</b>

**COMMUNICABLE DISEASE**

T.B. Skin Tests	530
Sexually Transmitted Disease Investigations	232
Childhood Immunizations	1,092
CD Investigations	70
Pneumonia Vaccinations	809
Influenza Vaccinations	2,879
HIV Testing and Counseling	26
Adult Immunizations	1,540
<b>Total Activities -</b>	<b>7,178</b>

**FOOD SANITATION**

Food Establishment Inspections	254
Complaint Investigations	24
Temporary Food Stand Inspections	84
Preliminary Inspections	25
Reinspections	8
Consultations Provided	256
<b>Total Activities -</b>	<b>651</b>

**POTABLE WATER**

Water Wells Installed	10
New Water Wells Inspected	19
Abandoned Wells Sealed	6
Well Permits Issued	16
<b>Total ActivitiesWater -</b>	<b>51</b>



**Public Health**  
Prevent · Promote · Protect  
**LOGAN COUNTY**

**PERSONS SERVED BY**

Asthma	0
Breast & Cervical Cancer	0
Emergency Preparedness/MRC	574
Food	43
Foster Parenting	250
Heart Health (Teens)	0
Injury	0
Oral Health	195
Public Health (General)	670
Tobacco	3,846
Women's, Infant's & Children	1,391
Other	
<b>Total Activities -</b>	<b>6,969</b>

**PRIVATE SEWAGE**

Sewage Permits Issued	45
Sewage Systems Installed	42
Sewage Systems Inspected	42
Sewage Complaints	4
Pumper Trucks Inspected	4
Consultations Provided	304
<b>Total Activities -</b>	<b>441</b>

**NUISSANCE**

Complaints	15
Field Visits	15
<b>Total Activities -</b>	<b>30</b>

**TANNING**

Inspections	5
Reinspections	0
<b>Total Activities -</b>	<b>5</b>

**BODY ART**

Inspections	0
Reinspections	0
Complaint Investigation	0
<b>Total Activities -</b>	<b>0</b>

**For 45 years the Health Department has promoted good health for the county's most valuable resource - its people**

# CLINIC SCHEDULE

## Public Health Clinic Monday - Friday 7:30 AM to 4:30 PM (Walk-in)

Services Available: Immunizations, Blood Pressure, Pregnancy Tests, T.B. Skin Testing, Injections, Hemoglobin, Glucose Screenings, Blood Lead Screenings, Foreign Travel Advisory and Medication Set-Up.

## Dental Clinic Monday - Thursday 7:30AM to 4:30 PM (By appointment)

Exams, Restorative, & Hygiene Services

### HEALTH DEPARTMENT SATELLITE CLINICS

Friendship Manor, 2nd Friday, 10:30-11:30 a.m.

Logan Court High-Rise, 3rd Friday, 10:30-11:30 a.m.

### HEALTH DEPARTMENT STAFF

#### ADMINISTRATION

Don Cavi, MS, LEHP, Public Health Administrator  
 Katherine Yaple, BBA, Director of Finance  
 Jennifer Bergman, Assistant Director of Finance  
 Emily Hauter, BS, CHES, Emergency Response Coordinator/Health Educator  
 Nina Huddlestun, Administrative Assistant/Director of Support Services

Kara Davis, RN, BSN, Director of Nursing/Assistant Administrator  
 Melodye Crabtree, RN, BSN, Home Health Supervisor  
 Charity Jarmakas, RN, BSN, Director of HealthWorks  
 Sharon Molitoris, DDS, Dental Director  
 Ryan Williams, BS, LEHP, Director of Environmental Health

#### DIRECT SERVICES

Fay Allison, BS, Sanitarian  
 Mary Anderson, RN, BSN  
 Susie Billington, CAN  
 Sarah Cook, RN  
 Molly DiBerardino, Dental Assista  
 Margie Dollinger, RN

Kenda Jones, RN  
 Candice Letterly, Breast Feeding Peer Counselor  
 Kelly Lowery, RN  
 Dana Oltmanns, RN, BSN, CLC  
 Jennifer Onken, RN, BSN  
 Stacy Peacock, RN

Katie Samson, RN, BSN  
 Kim Schmalshof, RN, BSN  
 Mary Southerlan, RDH  
 Shelly Thomas, RN, BSN

### ORGANIZATIONAL SUPPORT SERVICES

Tara Comstock, Finance/Billing Clerk  
 Molly Donnelly, BSW, HealthWorks Case Manager  
 Samantha Green, Support Services Clerk/Dental Assistant  
 Jan Hashman, HealthWorks Support Clerk

Tina Huff, Support Services Clerk  
 Lisa Rippon, WIC Clerk/Case Mgr. Asst.  
 Deniece Saylor, Support Services Clerk  
 Ed Tibbits, Janitor/Maintenance

#### Ten Leading Causes of Death in Logan County 2010\*

Cause	Number
1 Cancer	85
2 Heart Disease	67
3 Alzheimer's Disease	22
4 Stroke	17
5 Accidents	10
6 Chronic Respiratory Disease	7
7 Diabetes	6
8 Influenza/Pneumonia	6
9 Kidney Disease	4
10 Septicemia	4
All Other	100
Total	328

#### Logan County Demographics

Total Population	30,305
Male	15,365
Female	14,940
Race	
White	27,002
Black or African American	2,273
American Indian/Alaska Native	61
Asian	182
Pacific Islander	0
Hispanic or Latino	879
Median Age (years)	37.2
Total Housing Units	12,107

\* Last year data available

Source: U.S. Census Bureau